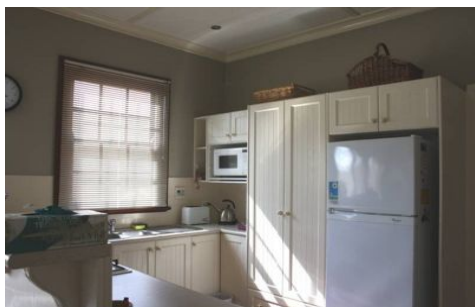


DOWLING

PROPERTY



GEORGETOWN

2  2  1 

Presented to please is this delightful 1930's Hudson character filled gracious gem with a front picket fence is located in a highly sought after street & suburb. This home offers a mosaic tiled entry, hallway which leads into spacious open plan living/dining tastefully renovated in neutral tones with bone carpet, timber blinds & r/c a/c. & gas outlet for winter comfort. High ornate ceilings & original features complete the picture. French doors open to enclosed verandah/sunroom/study or possibly a 3rd bedroom. Open plan modern white kitchen with gas cook tops and electric oven, pantry and saucepan drawers adjoining family room or casual dining and a 2nd r/c a/c.. Stylish beige bathroom with IXL tastic & clear shower screen and a separate w.c with 2nd shower. 2 generous bedrooms, main bedroom bay window &

Type : House
Land Size : 443 sqm
View : <https://www.dowlingproperty.com.au/sale/newcastle-region/georgetown/residential/house/7421442>

[For full version visit the website](https://www.dowlingproperty.com.au)

<https://www.dowlingproperty.com.au>