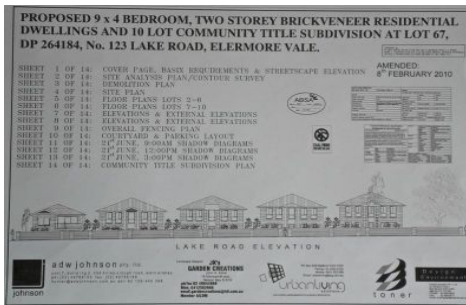
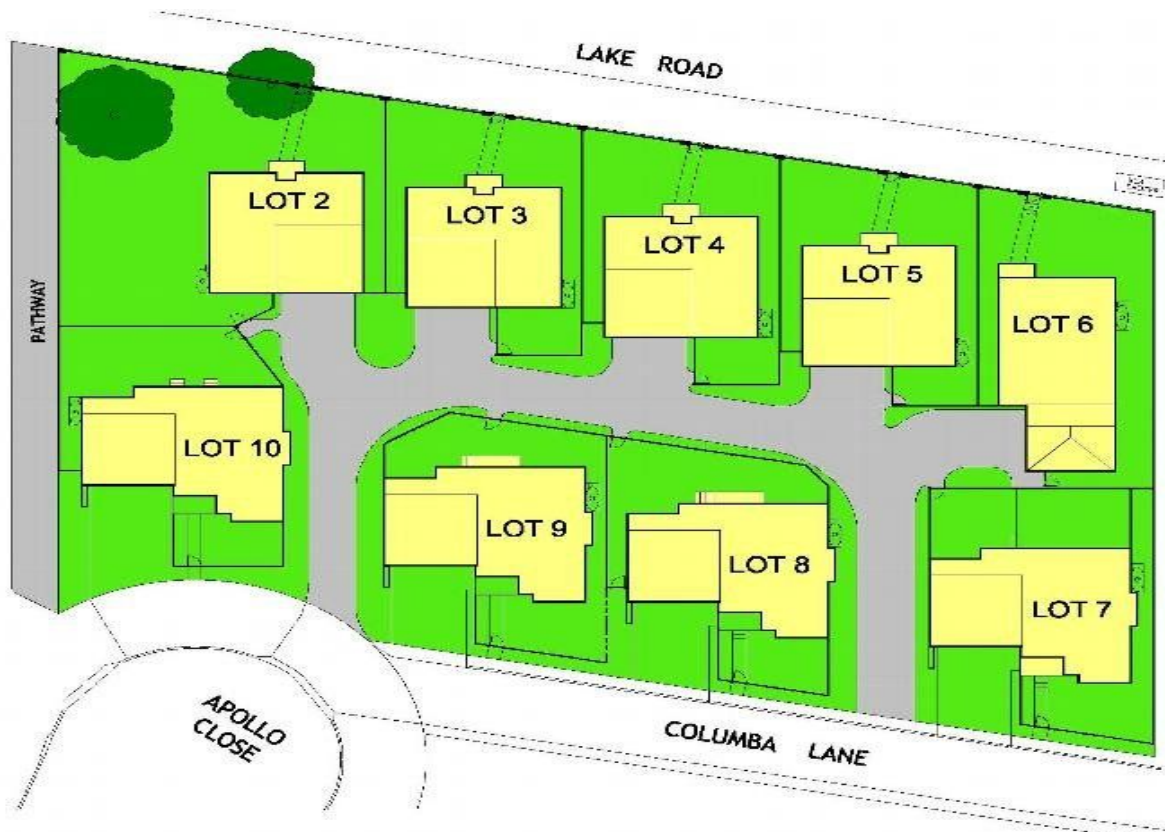


DOWLING

PROPERTY



123 LAKE Road ELMORE VALE NSW

4 1

D.A. Approved Site
9x4 Bedroom Homes
Over 3000M2 Block
2 Street Access

Type : House
Land Size : 3000 sqm
View : <https://www.dowlingproperty.com.au/sale/nsw/newcastle-region/elmore-vale/residential/house/7421567>

Located high on the hill with extensive views, brilliant development site with ideal car access from 2 streets.

Currently contains 2 properties, one commercial lease plus 4 bedroom, double garage house - total rental return for both properties in the vicinity of \$50,000 per annum.

Plans available for 9 detached brick veneer residential dwellings - all with 4 bedrooms, main ensuite & walk in



Michael Delaney
0249526655

[For full version visit the website](https://www.dowlingproperty.com.au)

<https://www.dowlingproperty.com.au>