




DOWLING

PROPERTY



4/54 William Street JESMOND NSW

2  1  1 

Here is the perfect opportunity for retirees, singles, 1st home buyers or astute investors with very manageable strata fees and low outgoings.

Put this gem on your MUST SEE LIST today - we welcome you to our immaculate, modern, contemporary 2 bedroom villa.

Situated in the middle of a small boutique block in a very quiet cul-de-sac.

Easy care tiled entry to formal spacious air-conditioned living.

Neutral decor throughout just add your own accessories.

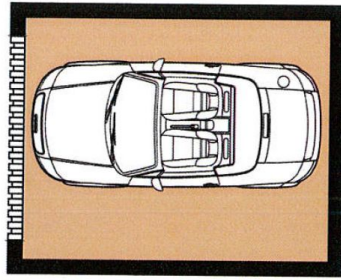
Type : House

View : <https://www.dowlingproperty.com.au/sale/nsw/newcastle-region/jesmond/residential/house/7421714>

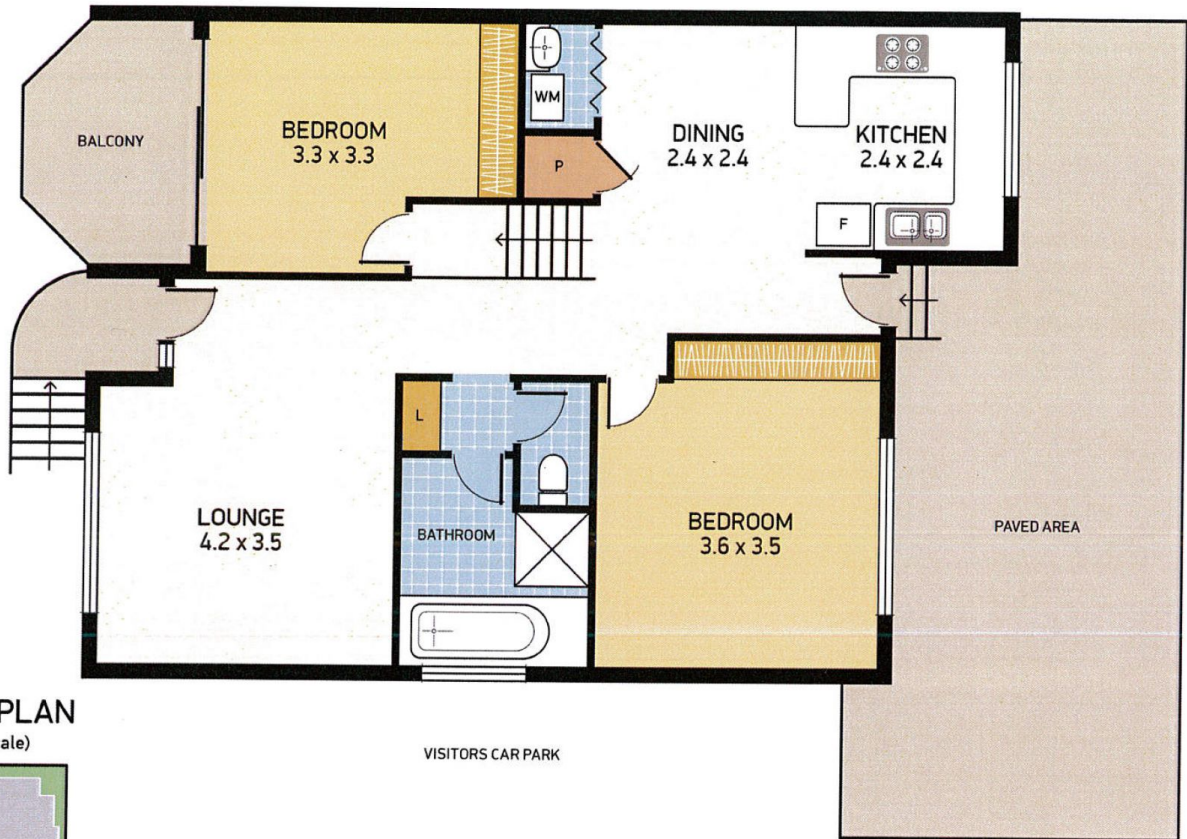
[For full version visit the website](https://www.dowlingproperty.com.au)

<https://www.dowlingproperty.com.au>

WM 1075W
REF 865W

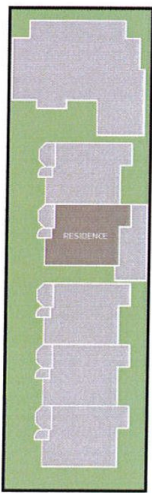


LOWER LEVEL



UPPER LEVEL

SITE PLAN
(not to scale)



WILLIAM ST

VISITORS CAR PARK



4/54 WILLIAM ST, JESMOND



Disclaimer: This information has been provided to us from the vendor and or their conveyancer or solicitor, no guarantee is given in respect of its accuracy. Any person viewing this information should make their own enquiries and only rely on those enquiries.

Real Estate

Dowling
New Lambton