



6 Hope Street JESMOND NSW

2 1 1

Quality built, solid double brick, lovingly cared for family home. right on the border of North Lambton.

With extra large rooms it offers 2 substantial bedrooms and 2 separate living rooms, one with air conditioning The floor plan is versatile and could be configured to 3 bedrooms if required.

The very neat and functional kitchen and bathroom still have scope to completely renovate if desired, so it's a home that has room to grow and offers endless possibilities.

Located in a quiet street with sought after north facing back yard the block is approx. 470m2 and has drive access to a

[For full version visit the website](https://www.dowlingproperty.com.au)

Type : House
Land Size : 470 sqm
View : <https://www.dowlingproperty.com.au/sale/newcastle-region/jesmond/residential/house/7421740>



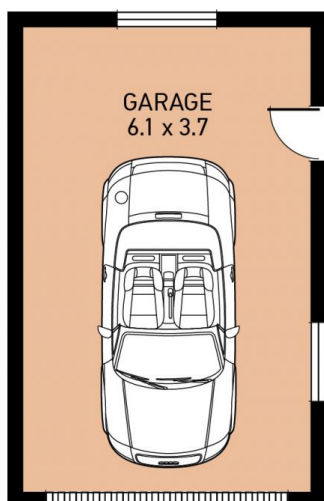
Michael Delaney
0249526655

SITE PLAN

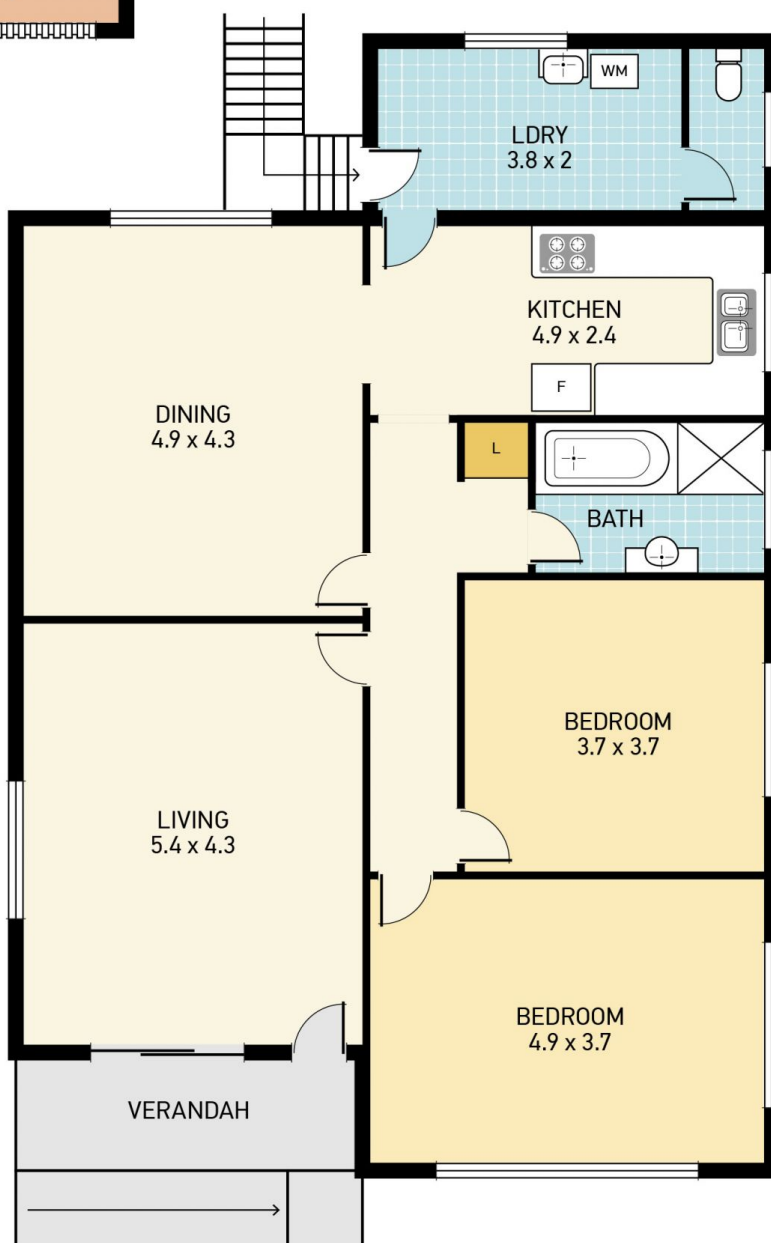
(not to scale)



HOPE ST



GARAGE
6.1 x 3.7



LDry
3.8 x 2

KITCHEN
4.9 x 2.4

DINING
4.9 x 4.3

LIVING
5.4 x 4.3

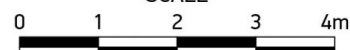
VERANDAH

BEDROOM
3.7 x 3.7

BEDROOM
4.9 x 3.7



SCALE



6 HOPE ST, JESMOND

Disclaimer: This information has been provided to us from the vendor and or their conveyancer or solicitor, no guarantee is given in respect of its accuracy. Any person viewing this information should make their own enquiries and only rely on those enquiries.
© 2016 Floor Plan National - All rights Reserved

Real
Estate

Dowling
New Lambton