



128 Russell Road NEW LAMBTON NSW

3  1  1 

Perfect start, nothing to spend but miles and miles of future potential.

Light bright & airy North facing, this weatherboard & tile 3 bedroom home has been in the one family for 60 years.

The home features highly polished floor boards, patterned cornices, spacious living with fireplace and gas outlet.

The sunny kitchen, overlooking the front garden, has been modernised and includes gas cooktop, a concealed dishwasher and range-hood.

The bathroom has also had an update and boasts separate shower and bath with a 2nd w.c. in laundry downstairs.

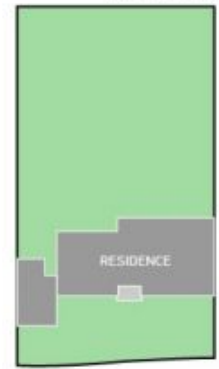
Type : House
Land Size : 669 sqm
View : <https://www.dowlingproperty.com.au/sale/newcastle-region/new-lambton/residential/house/7421767>

[For full version visit the website](https://www.dowlingproperty.com.au)

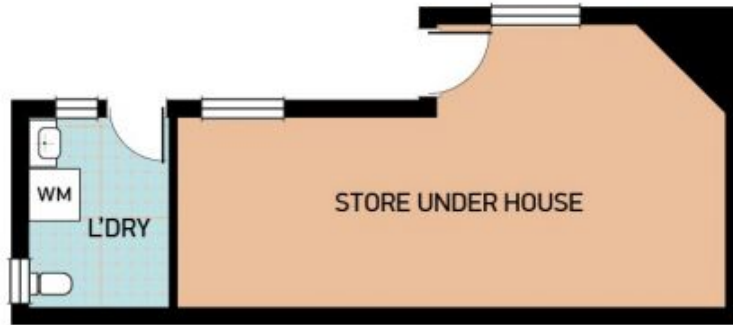
REF 700W x 1760H

SITE PLAN

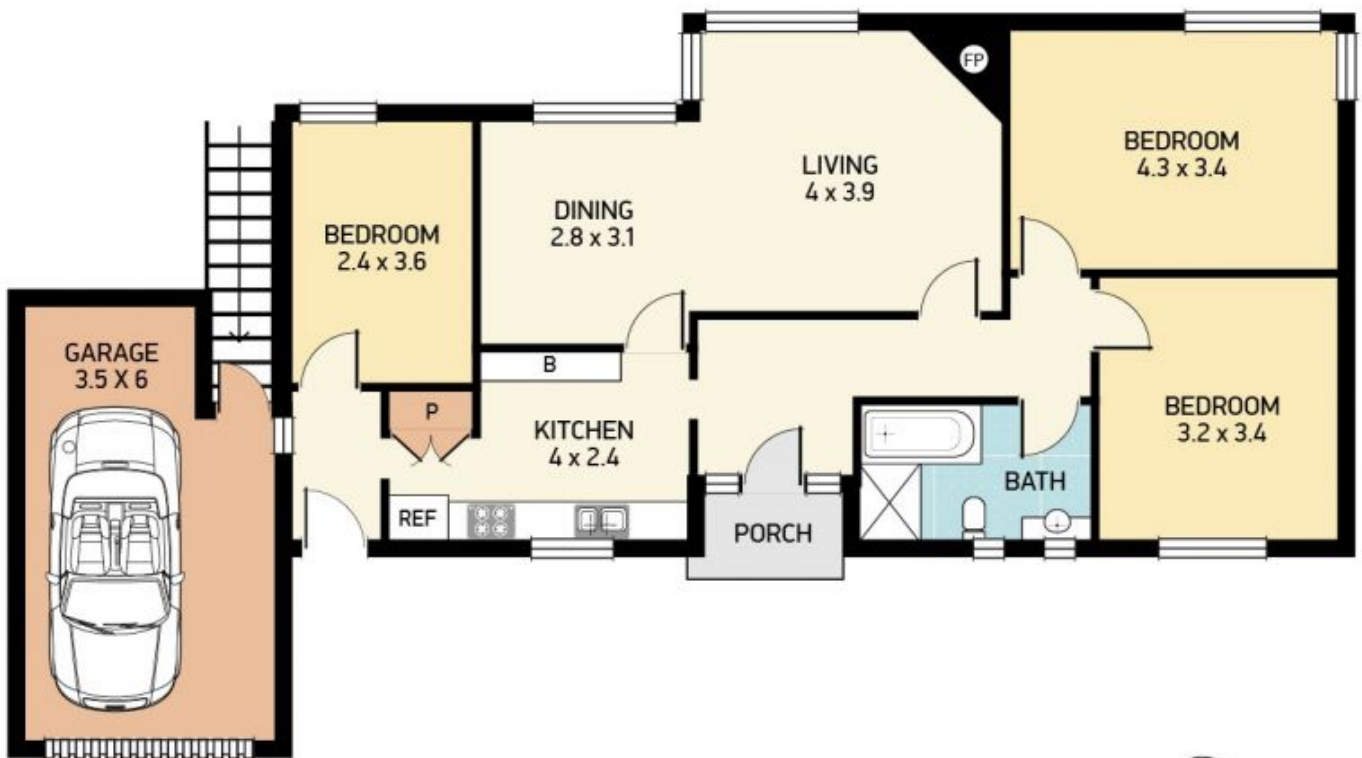
(not to scale)



RUSSELL RD



LOWER LEVEL



UPPER LEVEL



SCALE



128 RUSSELL RD, NEW LAMBTON

Disclaimer: This information has been provided to us from the vendor and/or their conveyancer or solicitor, no guarantee is given in respect of its accuracy. Any person viewing this information should make their own enquiries and only rely on those enquiries.
© 2016 Floor Plan National - All rights Reserved

DOWLING
PROPERTY