

# DOWLING

PROPERTY



27 Pride Avenue LAMBTON NSW

3  1  2 

OPPORTUNITY KNOCKS!!

Nestled In a leafy part of this popular quiet friendly neighbourhood, you will find this freshly painted 3 bedroom weatherboard and tile delightful family home.

Set on a large 645 sqm block with handy rear lane access, will accommodate your boat/and or trailer.

Wide entry opens to spacious light filled air conditioned living/dining area.

Neat galley gas kitchen with open shelving to display your

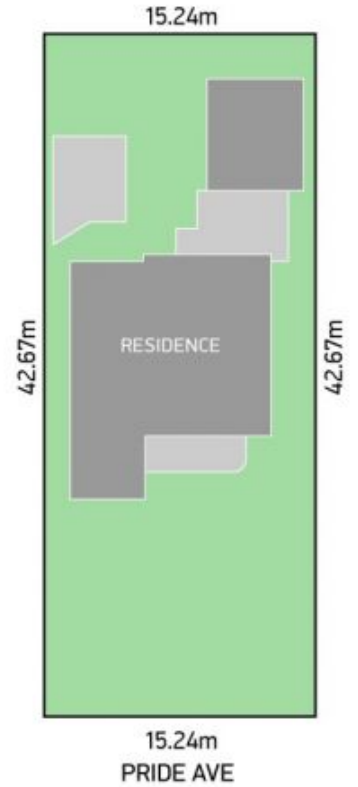
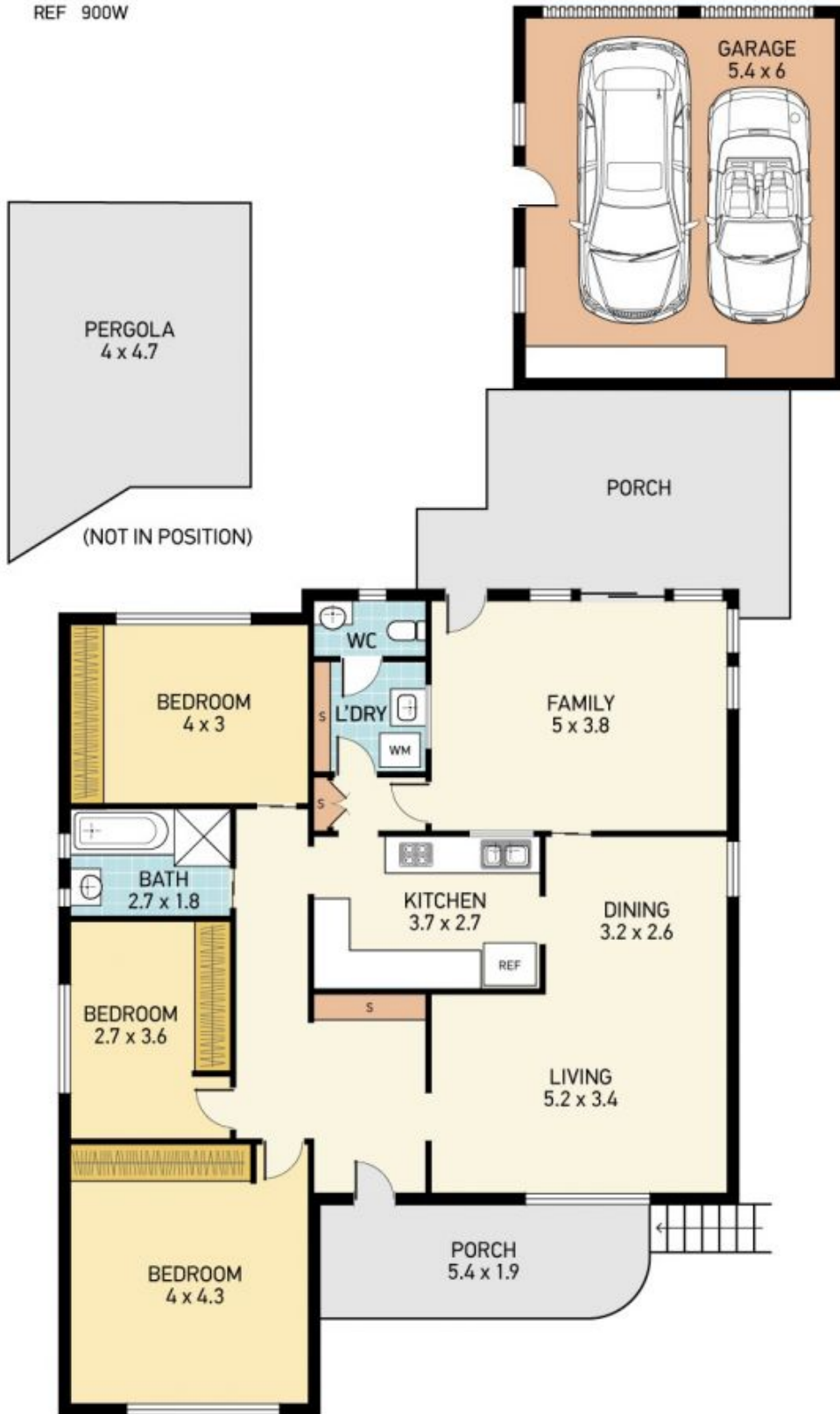
[For full version visit the website](https://www.dowlingproperty.com.au)

**Type** : House  
**Land Size** : 656 sqm  
**View** : <https://www.dowlingproperty.com.au/sale/newcastle-region/lambton/residential/house/7421809>

<https://www.dowlingproperty.com.au>

WM 660W  
REF 900W

### SITE PLAN (not to scale)



## 27 PRIDE AVE, LAMBTON

Disclaimer: This information has been provided to us from the vendor and or their conveyancer or solicitor, no guarantee is given in respect of its accuracy. Any person viewing this information should make their own enquiries and only rely on those enquiries.  
© 2019 Floor Plan National - All rights Reserved

**DOWLING**  
PROPERTY