



2/147 Young Road LAMBTON NSW

3 2 1

ENJOY A CAREFREE LIFESTYLE!

Contemporary, with a sunny Northerly aspect, low maintenance, ultra-modern home in one of Newcastle's most sought after Suburbs.

Upstairs level, features open plan, spacious light-filled air conditioned living/dining and gourmet gas kitchen, includes caesarstone bench tops, dishwasher, pantry and large space for your refrigerator.

Glassed bi-fold doors open to a sunny private tiled deck, the perfect entertainer for Sunday barbecues, offering expansive views to Newcastle.

[For full version visit the website](https://www.dowlingproperty.com.au)

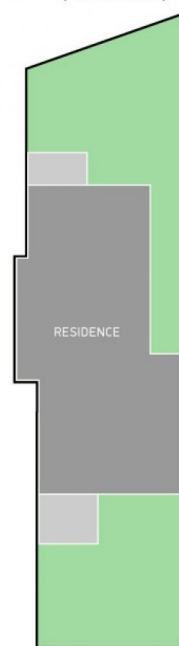
Type : House
Land Size : 233 sqm
View : <https://www.dowlingproperty.com.au/sale/newcastle-region/lambton/residential/house/7421821>



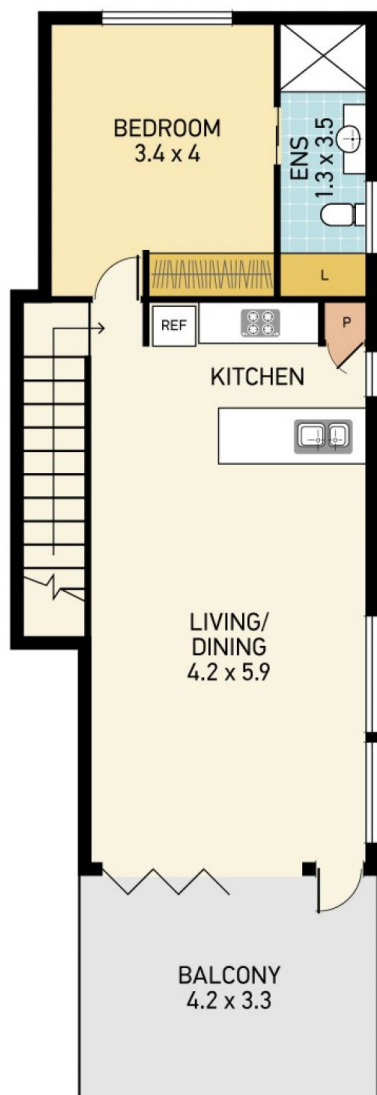
Michael Delaney
0249526655

WM 890W
REF 890W x 1780H

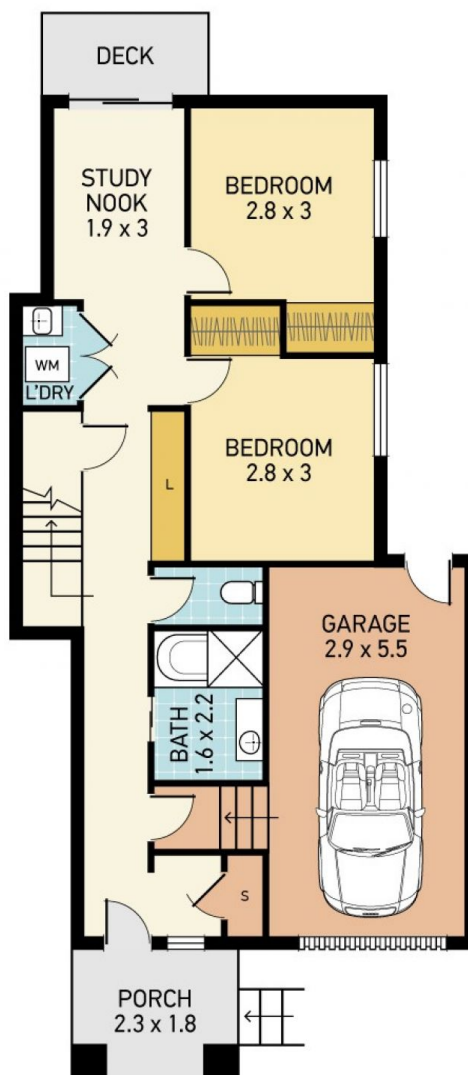
SITE PLAN (not to scale)



YOUNG RD



UPPER LEVEL



LOWER LEVEL



2/147 YOUNG RD, LAMBTON

Disclaimer: This information has been provided to us from the vendor and or their conveyancer or solicitor, no guarantee is given in respect of its accuracy. Any person viewing this information should make their own enquiries and only rely on those enquiries.
© 2020 Floor Plan National - All rights Reserved

DOWLING
PROPERTY