



32 Norfolk Avenue ISLINGTON NSW

2 1 2

This home boasts real street appeal, with a genuine feeling of homeliness, reminiscent of a bygone era.

Enjoy a warm and welcoming cosy atmosphere, offering the best of quality and comfort. This charming home boasts many original features, including high ceilings, decorative cornices, picture rails, dado boards, lead-light windows and easy care bamboo flooring.

At the front of the home and on either side of the wide hallway entry, you will find two double bedrooms with built in robes, lead-light windows, ceiling fans and aesthetically appealing shutters, allowing privacy and filtered light.

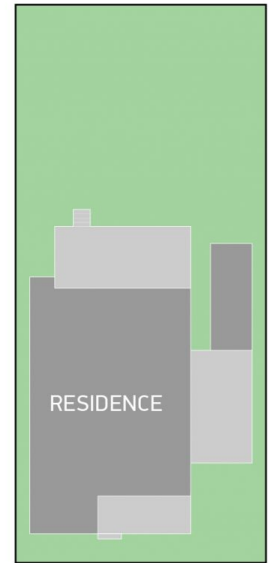
Type : House
Land Size : 337 sqm
View : <https://www.dowlingproperty.com.au/sale/newcastle-region/islington/residential/house/7421831>

[For full version visit the website](https://www.dowlingproperty.com.au)

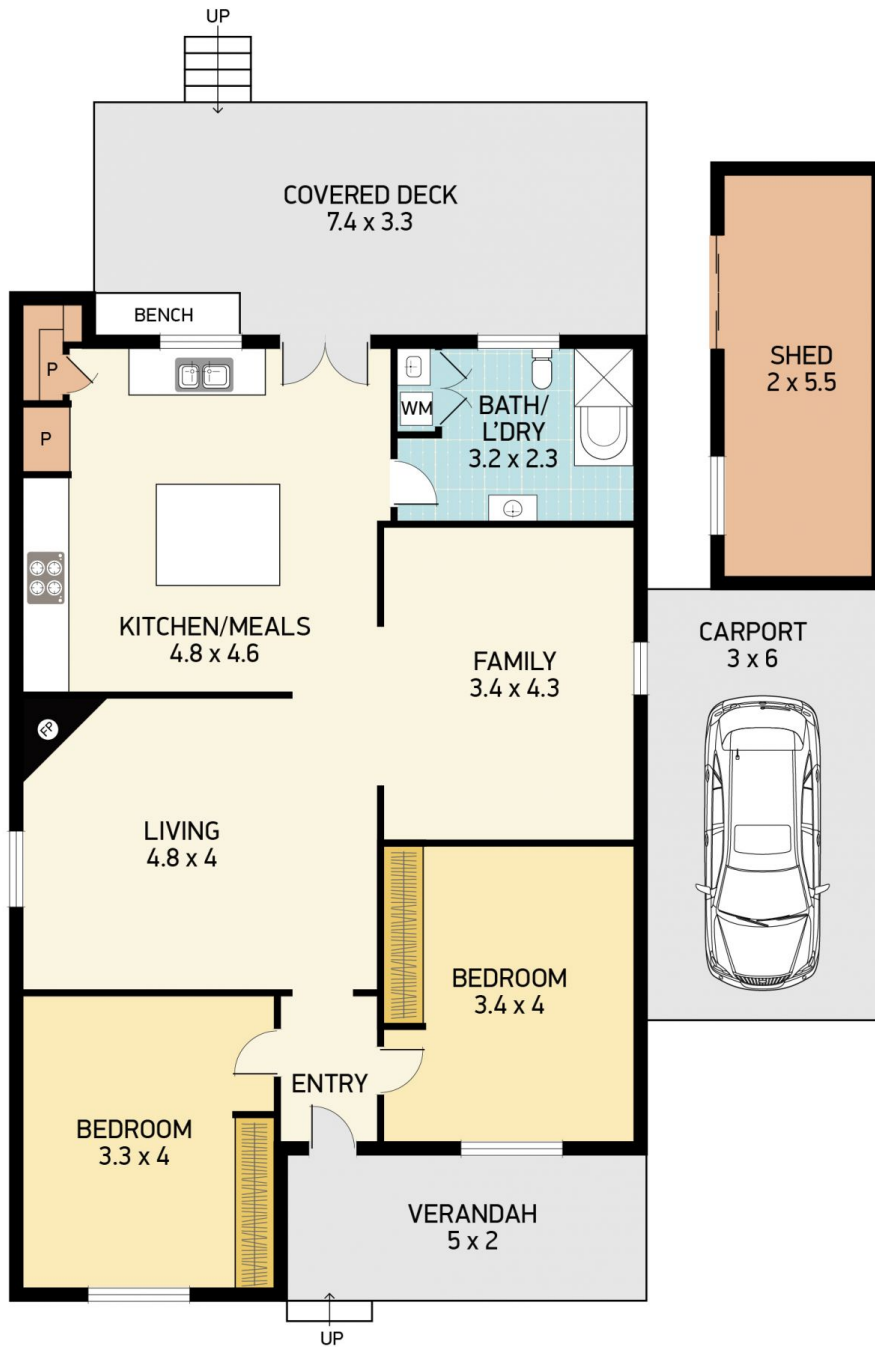
<https://www.dowlingproperty.com.au>

SITE PLAN

(not to scale)



NORFOLK AVE



32 NORFOLK AVE, ISLINGTON

Disclaimer: This information has been provided to us from the vendor and or their conveyancer or solicitor, no guarantee is given in respect of its accuracy. Any person viewing this information should make their own enquiries and only rely on those enquiries.
© 2021 Floor Plan National - All rights Reserved

DOWLING
PROPERTY