



9/94 ST James Road NEW LAMBTON NSW

2  1  1 

Great entry level low maintenance investment to start your portfolio or 1st home buyer. Be wowed by the generous space and fabulous location. Bright and spacious top floor unit. Close proximity to popular schools, shopping centres, hospitals and public transport.

Type : Unit

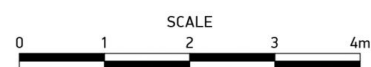
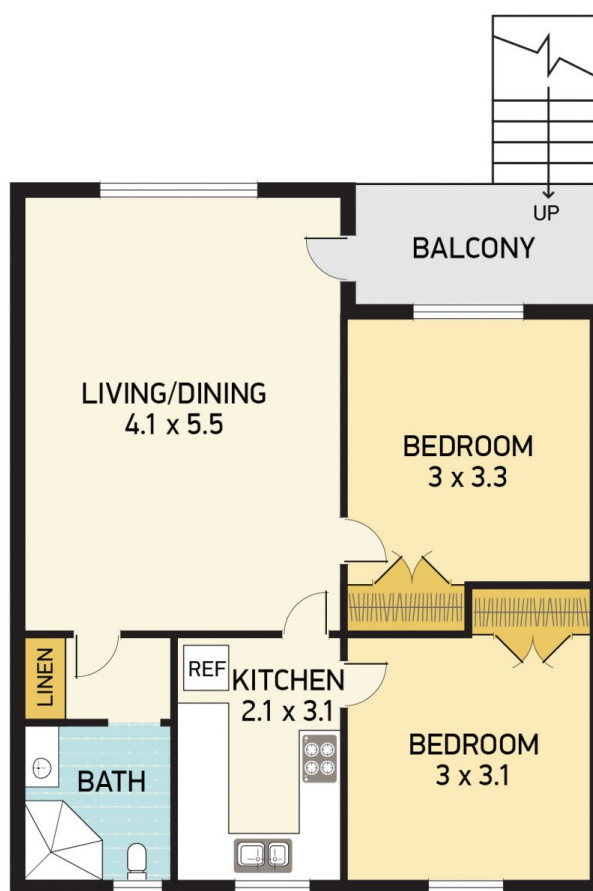
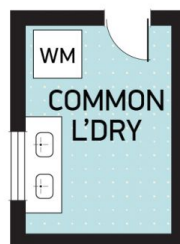
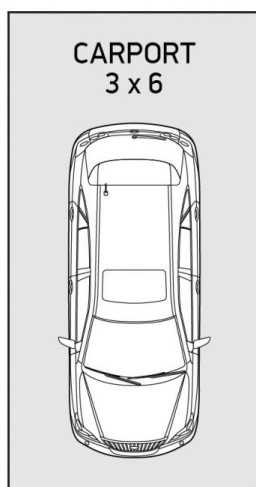
View : <https://www.dowlingproperty.com.au/sale/nsw/newcastle-region/new-lambton/residential/unit/7421832>

- New kitchen
- Modern bathroom
- Split cycle air conditioning
- Built in robes in both bedrooms
- Carport
- Well maintained common areas
- Rent potential of \$400p.w
- Strata Levy \$608.85qtr



Maddie Malcolm
4952 6655

[For full version visit the website](https://www.dowlingproperty.com.au)



9/94 ST JAMES RD, NEW LAMBTON

Disclaimer: This information has been provided to us from the vendor and or their conveyancer or solicitor, no guarantee is given in respect of its accuracy. Any person viewing this information should make their own enquiries and only rely on those enquiries.
© 2021 Floor Plan National - All rights Reserved

DOWLING
PROPERTY