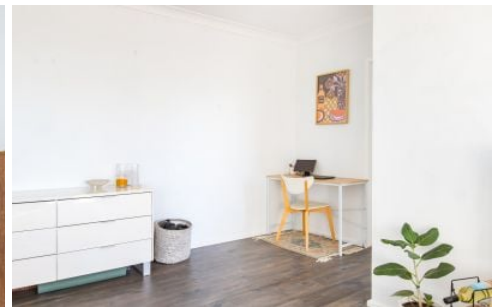
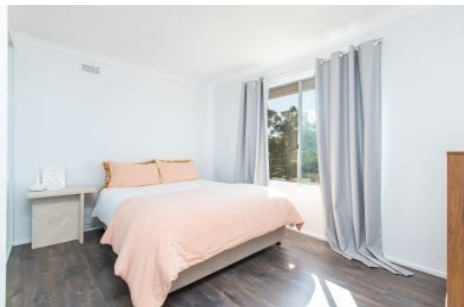


# DOWLING

PROPERTY



10/102 Bridge Street Waratah NSW

1  1  1 

Spacious top floor apartment in a quiet street of Waratah. Great start for first home buyers looking to get a foot in the door!

Flooded with light through all aspects, this units space glows. Presenting a peaceful and airy open plan living with a modern kitchen, flowing to a quaint balcony - perfect for a morning brew!

Generous sized bedroom including a built-in robe & neat bathroom allowing room to add your own personal touches.

Close proximity to Waratah Village, Mater Hospital, train station, public transport and parks. Currently leased at \$300.00p/w.

Featuring:

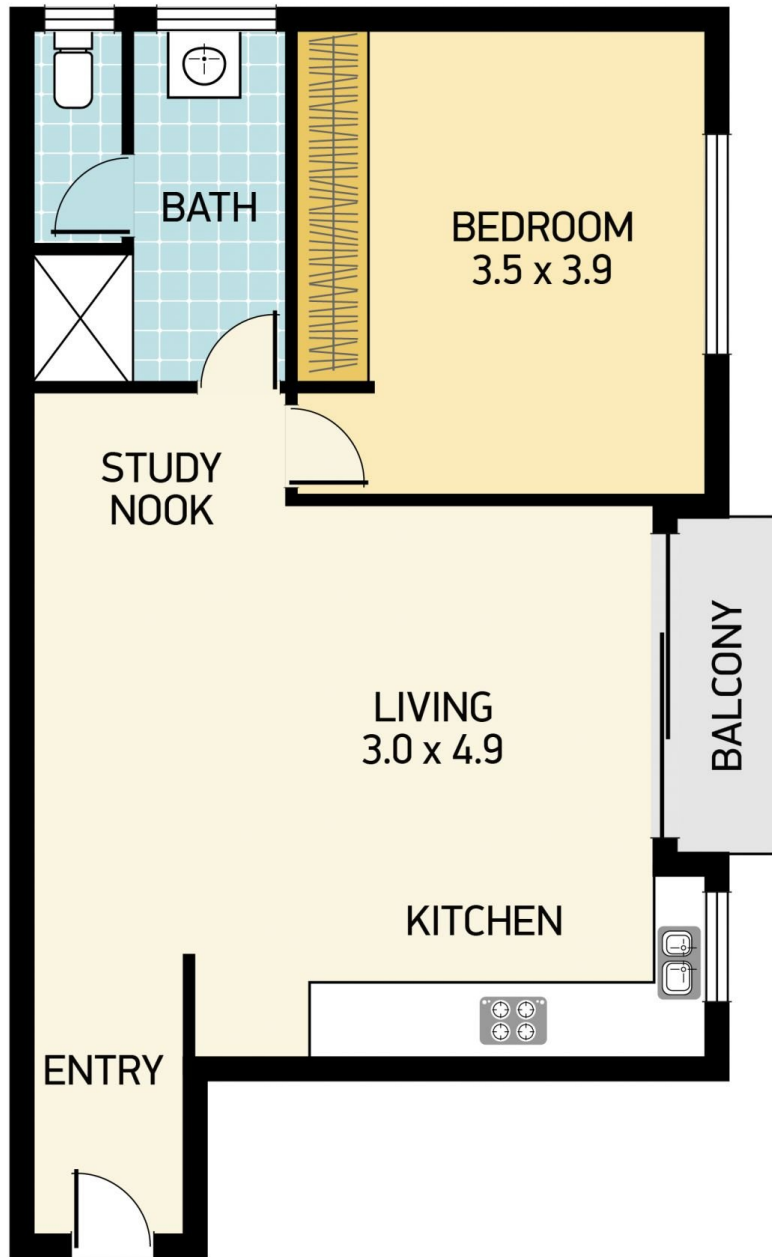
[For full version visit the website](https://www.dowlingproperty.com.au)

**Type** : Unit  
**Building Size** : 67 sqm  
**View** : <https://www.dowlingproperty.com.au/sale/nsw/newcastle-region/waratah/residential/unit/7518586>



**Maddie Malcolm**  
4952 6655

<https://www.dowlingproperty.com.au>



**DOWLING**  
PROPERTY